



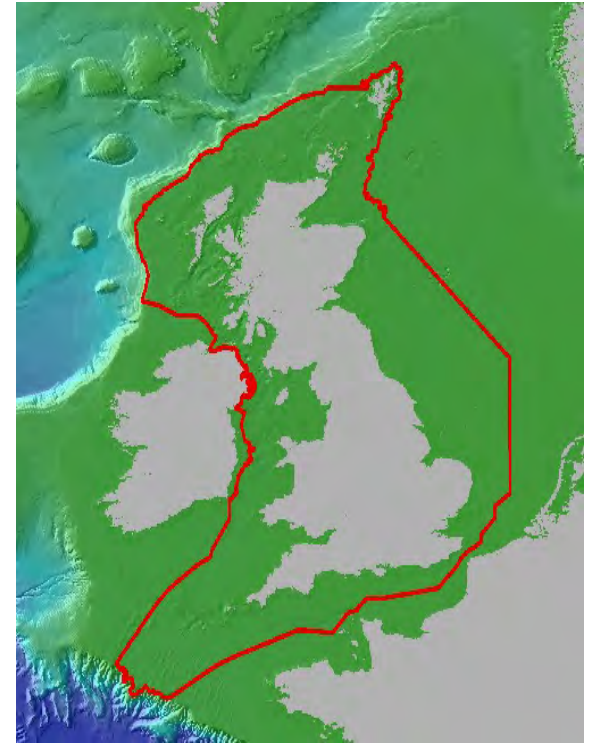
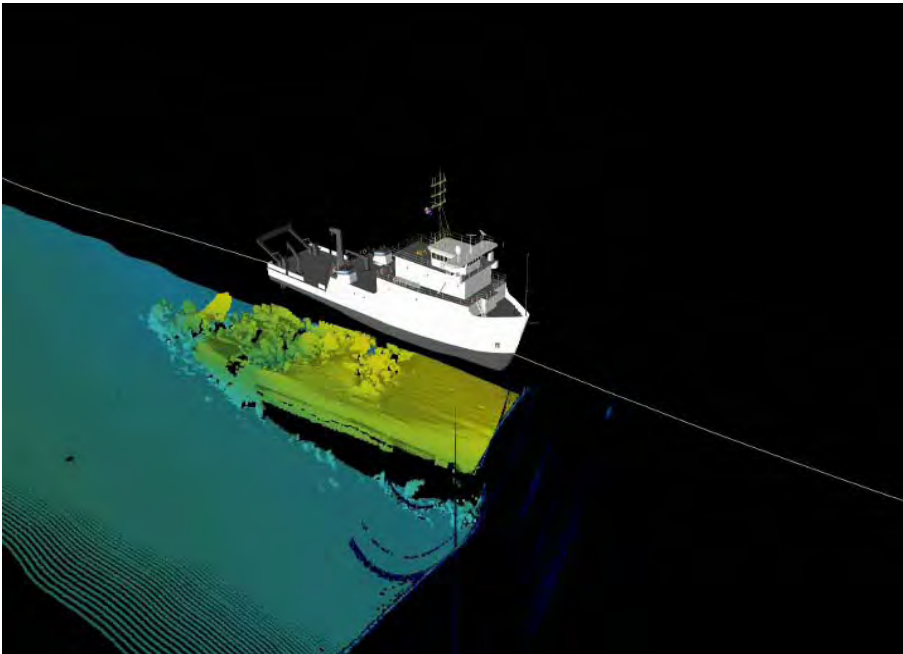
The UK Civil Hydrography Programme - Now and Into the Future



Safer Lives, Safer Ships, Cleaner Seas

The Civil Hydrography Programme

- Why do we do it?
- Where do we do it?
- How much do we do?



Current MCA Hydrography Strategy

- Maximise hydrographic benefit to the mariner
- A healthy and effective partnership:
 - An efficient and financially healthy UKHO to produce and provide navigational products
 - Efficient and financially healthy data exploiters (e.g. SeaZone) to provide wider-market products
 - An efficient and well-funded MCA CHP to provide source data
 - Demonstrate the Value of CHP work to DfT, Wider Government and the public.



And Taking It Forward...

- Maximise partnerships with other organisations (to improve efficiency and avoid duplication) e.g. DORIS, INTERREG, SE Coastal Monitoring, Devon Wildlife Trust, Crown Estate.
- An inclusive COSH (now CHATS!) and Hydro Data Sharing MoU.
- Make CHP data discoverable and widely available.
- Better use of GIS for survey prioritisation



Partnerships, CHATS and MoUs...

Working Together



Safer Lives, Safer Ships, Cleaner Seas

Enabling Partnerships

- Inclusive CHATS
- Assignable contracts
- Extendable contracts
- Costing Tool
- Hydro Data Sharing MoU



MCA MoU with DEFRA

- Free data sharing between participants
- Co-ordination of surveys
- Web-page with downloadable metadata shapefiles

www.mcga.gov.uk/hydrography



Safer Lives, Safer Ships, Cleaner Seas

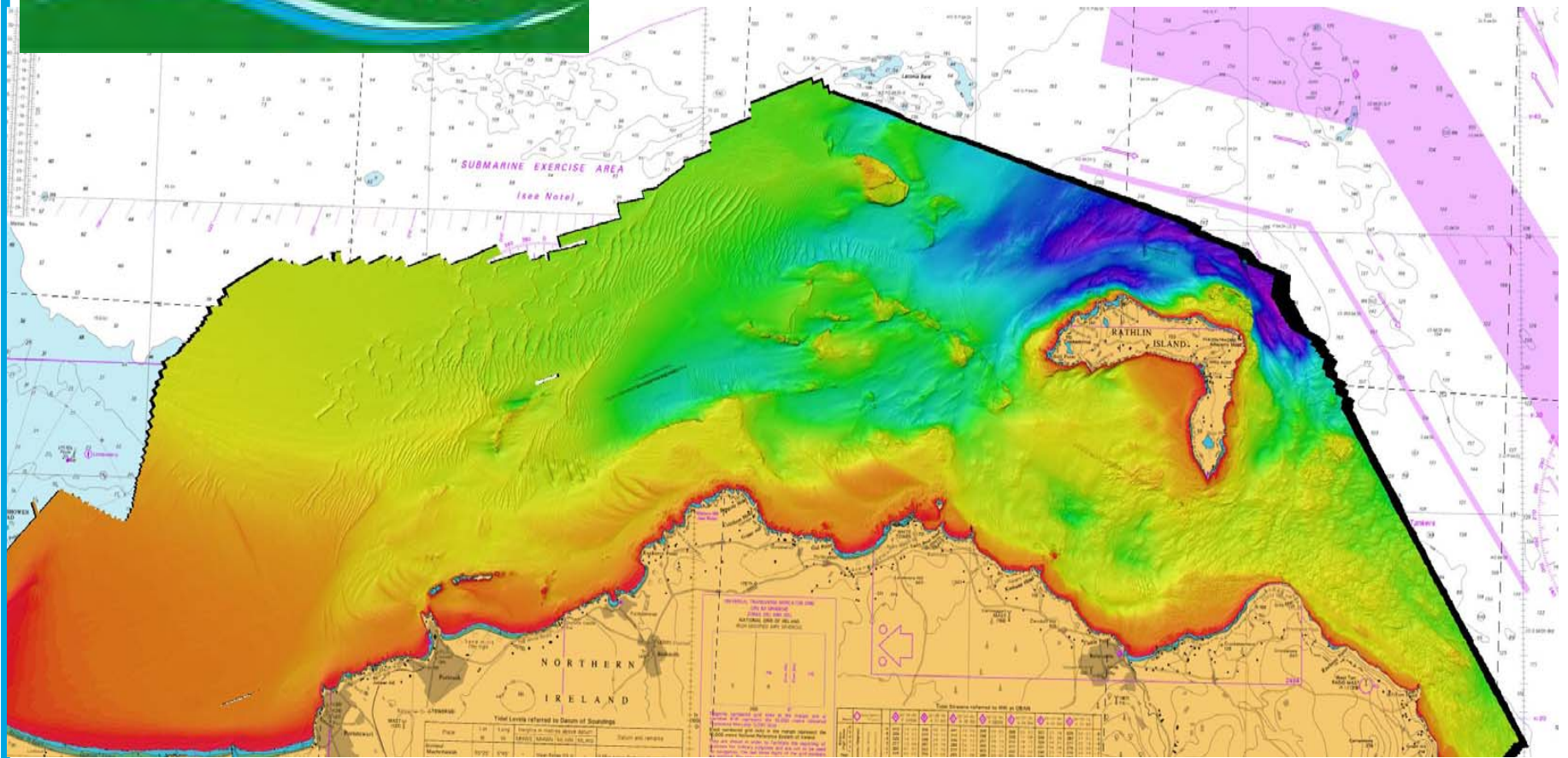
JIBS Data Available for Download

<https://jetstream.gsi.ie/jibs/index.html>

The screenshot displays the JIBS Public Viewer web application. At the top, the JIBS logo (Joint Irish Bathymetric Survey) is on the left, and the INTERREG logo and European Union flag are on the right, with the text "Project part financed by the European Union". The date "Saturday, September 27, 2008" is shown in the top right. Below the header is a navigation menu with buttons for "Layers", "Legend", "Index Map", "Zoom Location", "Select Data", "Download JIBS Data", "WMS Link", and "Help". A toolbar with various map navigation icons is located below the menu. The main content area is split into two panels. The left panel, titled "Map Layers", contains a tree view of data layers: "Sample Points" (with sub-items "Grab Sample Points 2008" and "Grab Sample Points 2007"), "Data Coverage" (with sub-items "Survey Linework", "Survey Coverage", and "LIDAR Data Coverage"), and "Water depth" (with sub-items "Bathymetry (Grid) Water Depth(m)" and "Bathymetry (3D Image) Water Depth(m)"). There are checkboxes next to each layer name, and a "Refresh Map" button below the list. Below the layers list are options for "Automatically Refresh Map" (unchecked) and "Show Legends" (checked). A "Hints" section is also present. The right panel shows a map of the coastal area with bathymetric data overlaid in a color gradient from yellow (shallow) to blue (deep). A north arrow is in the top right of the map area. At the bottom right of the map, the coordinates "Map center: 55°14' N, 7°15' W" are displayed. The bottom of the page features a footer with logos for DOE, NIEA (Northern Ireland Environment Agency), the Marine Institute (Foras na Mara), and MCA.

JIBS

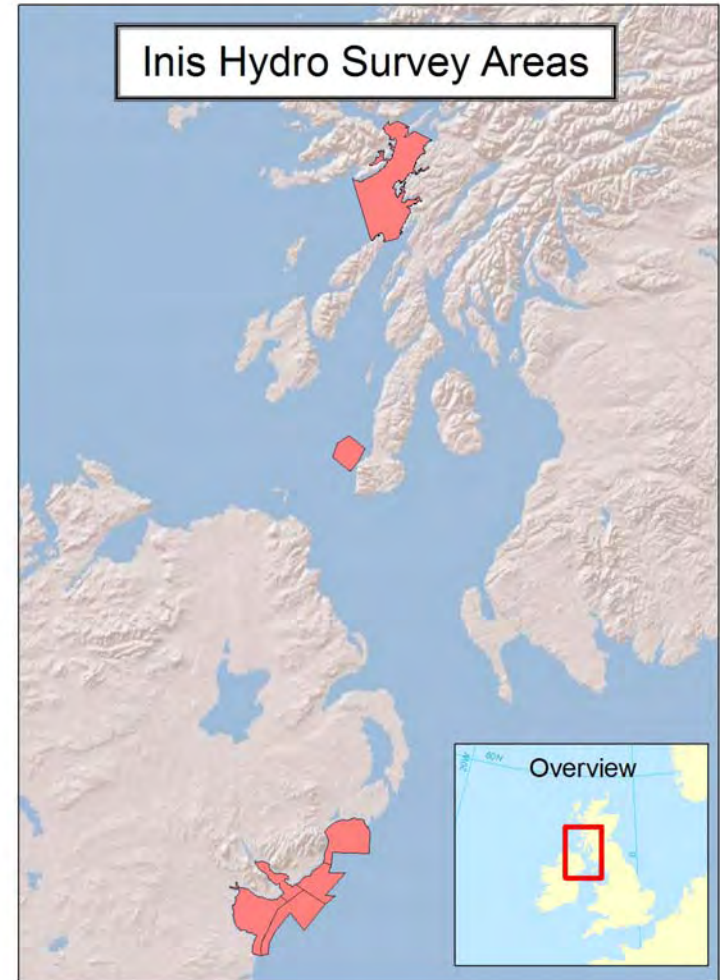
Joint Irish
Bathymetric
Survey



Safer Lives, Safer Ships, Cleaner Seas

INIS Hydro

- Bid for 3 Million Euros of INTERREG IV funds
- Partnership with:
 - Agri –Food and Biosciences Institute
 - Geological Survey of Ireland
 - Irish Marine Institute
 - Northern Lighthouse Board (Scotland)
 - Scottish Association for Marine Science
 - United Kingdom Hydrographic Office

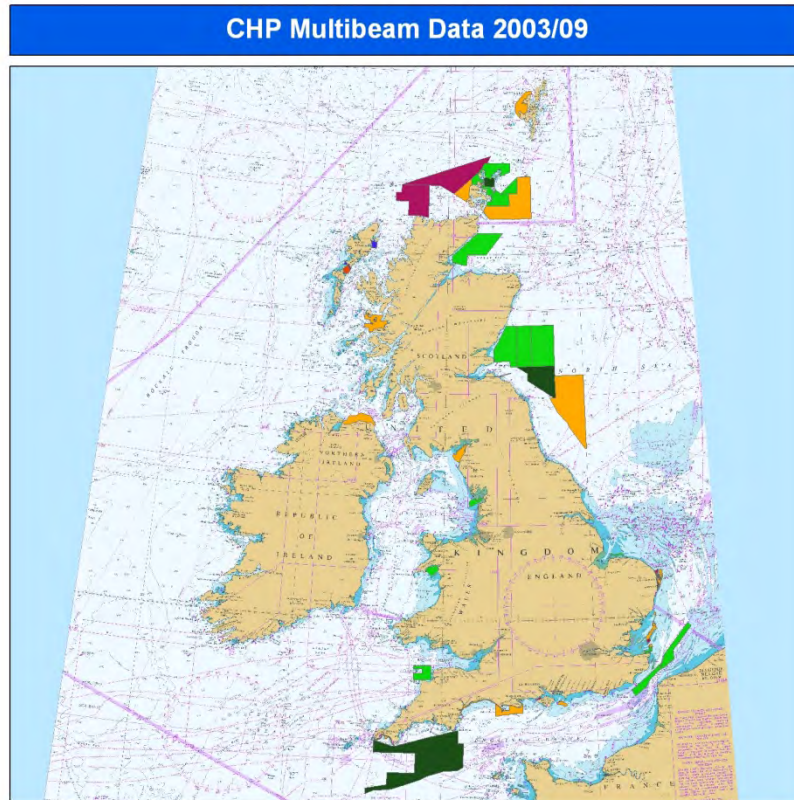


Data Discoverability (Now)



Safer Lives, Safer Ships, Cleaner Seas

MCA Metadata in Shapefile format



- ISO-Compliant
- Search on area
- Search on year
- Search on contractor
- Search on season
- Etc etc.

www.mcga.gov.uk/hydrography



Let's look at some metadata!



Safer Lives, Safer Ships, Cleaner Seas

Data Discoverability Contd.

Civil Hydrography Programme Results - Microsoft Internet Explorer

Address: http://www.mca.gov.uk/mca/mca-safety_information/river-com/ncp/ncp-help/hydrography/civil_hydrography_programme_results.htm

Preliminary 2007-2008 Routine Re-survey Results

Survey Name	Survey Area	Survey Reference No.
Approaches to Lowestoft	East Anglia	HI 1219
Holm Channel	East Anglia	HI 1220
Cookle Shoal	East Anglia	HI 1221

2006-2007 Routine Re-survey Results

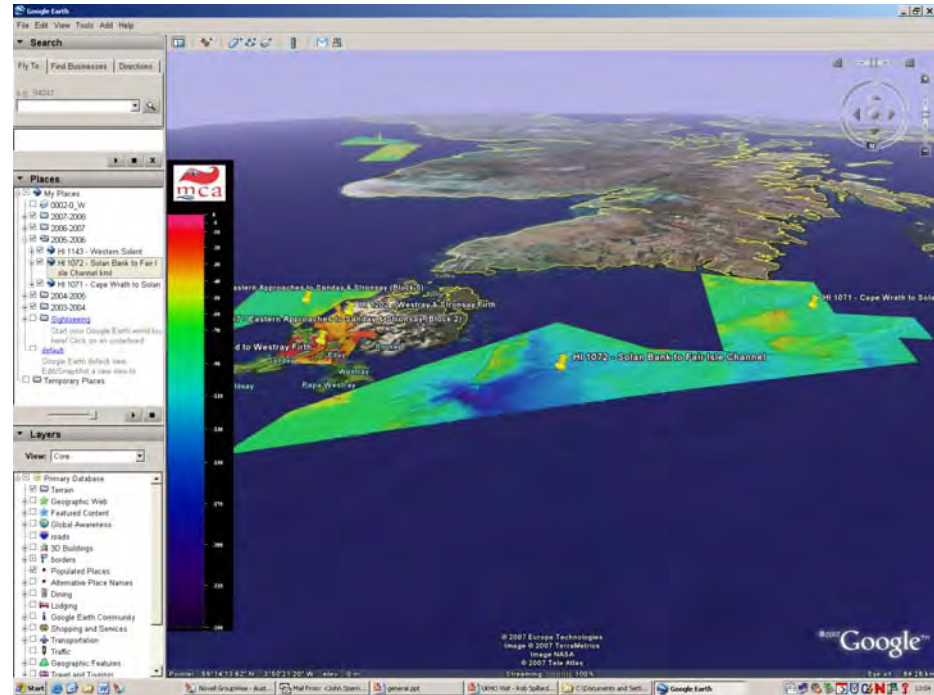
Survey Name	Survey Area	Survey Reference No.
Cookle Shoal (1.0Mb)	East Anglia	HI 1161
Cross Sands (3.5Mb)	East Anglia	HI 1162
Holm Channel (2.6Mb)	East Anglia	HI 1163
Approaches to Lowestoft (2.2Mb)	East Anglia	HI 1164
Sunk (2.4Mb)	Thames Estuary	HI 1165
Long Sand Head (3.0Mb)	Thames Estuary	HI 1166
Margate Road Inver (2.4Mb)	Thames Estuary	HI 1167
South Sand Head (1.7Mb)	Dover Strait	HI 1168
Gull Stream (1.3Mb)	Dover Strait	HI 1169
Sladway to Slakenay Overfalls (3.4Mb)	East Anglia	HI 1174

2006-2007 Area Survey Results

Survey Name	Survey Area	Survey Reference No.
Fremadoc Bay (1.8Mb)	Wales	HI 1201
Westray & Stromay Firth (1.5Mb)	Orkney	HI 1202
Wye Bank to Goodson (3.2Mb)	Scotland	HI 1182
Humbly Grove to Stanscore Point (3.0Mb)	South England (Solent)	HI 1156
Eastern Approaches to Sanday & Stromay - Block 2 (1.6Mb)	Orkney	HI 1137
Eastern Approaches to Sanday & Stromay - Block 3 (2.8Mb)	Orkney	HI 1137
Eastern Approaches to Sanday & Stromay - Block 5 (2.2Mb)	Orkney	HI 1137

Navigation menu: Hydrography, Navigation, Navigational Warnings, Navigation Safety Meetings, Technical Standards, Ports, Contact Us, Offshore Renewable Energy Installations, Safety Alerts - Technical, Health and Safety, Servicing Stations, Sea Angling Safety, NWSE, Survey & Certification Inspection.

Other links: Online Registration, Napoli Information, MCA subscriptions, Codes of Practice & Pleasure Craft Information.



Data Availability



Safer Lives, Safer Ships, Cleaner Seas

Availability of MCA Data (Now)

- Dense bathymetry data is available at negligible cost (cost of dissemination) in “Generic Sensor Format” from SeaZone
- SeaZone can also provide “Value-Added” data as thinned GIS-compatible files at commercial cost.



Availability of CHP Data (Next Year)

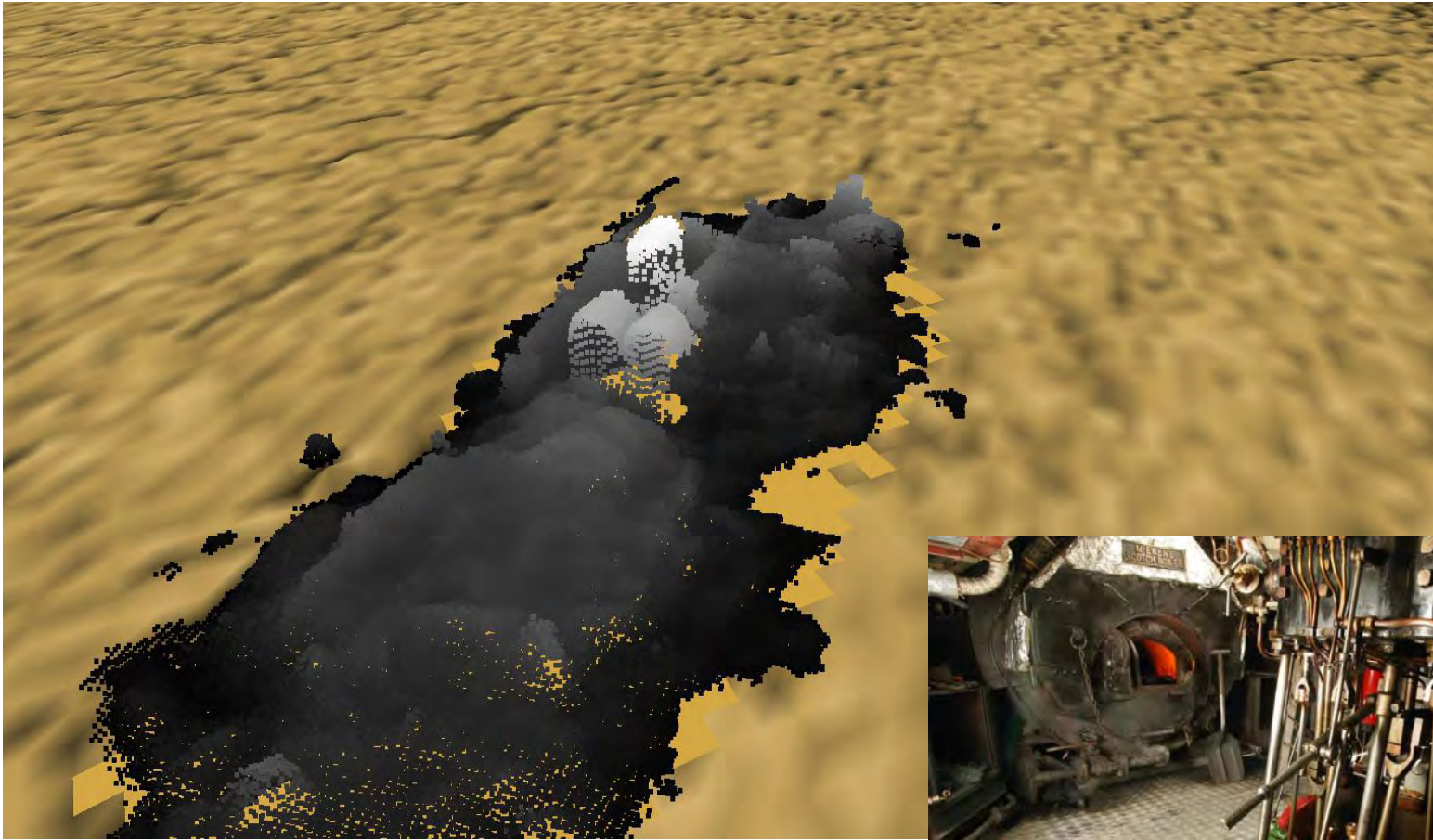
- The Cabinet Office “Power of Information Review” report recommends:
 - “It is the Taskforce's view that 'freeing up' geospatial data should be a priority.”
 - Public information should be available at marginal cost, which in practice means for free online.
 - “Freeing up the UK’s mapping and address data for use in new services”



How to Obtain CHP Data (Next Year)

- The MCA will work with the MEDIN DAC to deliver source CHP data free of charge by the end of next year.
- It is the MCA's intention to request other government organisations to commit to data sharing and programme sharing in return for free use of CHP data.





Safer Lives, Safer Ships, Cleaner Seas

Thankyou

rob.spillard@mcga.gov.uk

www.mcga.gov.uk/hydrography



Safer Lives, Safer Ships, Cleaner Seas